

rishita
Manhattan
2 & 3 BHK APARTMENTS

OMAXE WORLD, GOMTI NAGAR, SECTOR 7, EXTENSION, LUCKNOW

NEW YORK'S MANHATTAN LIFESTYLE FOR YOU



LIVE THE BIG CITY LIFE AT LUCKNOW



MADE FOR THE CHOSEN FEW



ARRIVE IN STYLE TO LUCKNOW'S BEST ADDRESS



STROLL FROM THE PLUSH LOBBY TO YOUR HOME



TAKE TIME TO RELAX AND SOCIALIZE



TAKE A DIP IN THE POOL OF HAPPINESS



THE GRAND CENTRAL BOULEVARD



A DESIGN THAT SUITS YOUR LIFESTYLE



THE KITCHEN FOR SOULFUL FOOD



HERE RESIDES YOUR PARADISE



YOUR ADDRESS IS AS EXCLUSIVE AS YOU



ONE OF ITS KIND STRUCTURE

MANHATTAN

Green Buildings

Energy Conservation Measure

Environment Friendly Structure

Architectural Impact
On Tower Plan

Playgrounds And Brooklyn
Playground 204

Sidewalk For Disables

Green Streets(251)

Professional Sports Arena

Basketball Courts 371

Manhattan neighbourhood
highlights – full of life

RISHITA MANHATTAN

13935.45 sq.mt. Centrally Green & Open Area

IGBC approved buildings

Fly ash based bricks

Rain water harvesting

Energy efficient building

Energy saving light fixtures

Low voc paints

Low flow water fixtures

Recycled construction material

Waste Management system

UPVC windows

Very well ventilated in terms of light and air

Balconies are spacious and designed for modern living

Gradually decreasing size, straight element

Brown stone colour Glasses according
to the IGBC norms

Kids playground with accessible features –
children of all abilities could play alongside each other

We are providing too

Natural vegetation not only inside the campus
but in and around the periphery

Indoor and outdoor sports we are paying high priority

Basketball Court and a Common Sports Court

International Cricket Stadium,
Upcoming Metro, Connaught Place,
IT City

FLOOR PLANS

Unit 2 BHK
 Size 1099 Sq.ft.

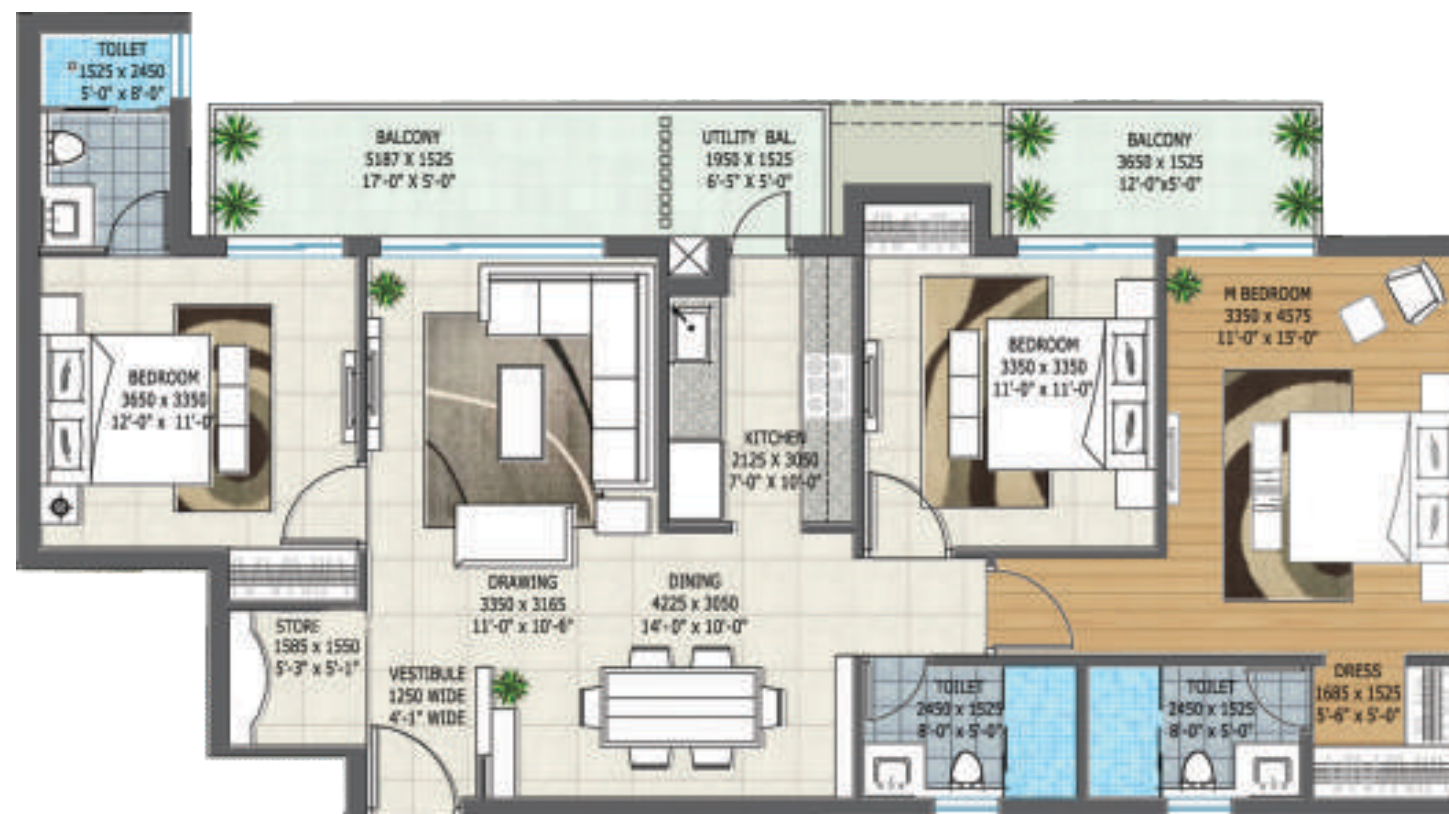


Unit 3 BHK
 Size 1375 Sq.ft.



FLOOR PLANS

Unit 3 BHK + Store
 Size 1680 Sq.ft.



ENTRY

Unit 3 BHK + Servant
 Size 1765 Sq.ft.



ENTRY

SPECIFICATIONS

Apartment Specifications	Material Description		Proposed Brand
Structure design	Earthquake Resistant Framed Structure as stipulated by IS Code for Better safety.		
Building Design	Based on Green Building Concept for better and healthy environment as per IGBC norms		
External Finish	Weather Proof Paint/ Texture Paint		Nerolac/Berger/Asian or equivalent
Living/Dinning/Foyer	Flooring	Vitrified Tiles	Nitco/Kajaria/RAK/Somany or equivalent
	Walls	Oil Bound Distemper	Nerolac/Berger/Asian or equivalent
	Ceiling	Oil Bound Distemper	Nerolac/Berger/Asian or equivalent
Master Bed Room	Flooring	Laminated Wooden Flooring	Armstrong/Perigo /Action Tesa or equivalent
	Walls	Oil Bound Distemper	Nerolac/Berger/Asian or equivalent
	Ceiling	Oil Bound Distemper	Nerolac/Berger/Asian or equivalent
Other Bed Rooms	Flooring	Vitrified Tiles	Nitco/Kajaria/RAK/Somany or equivalent
	Walls	Oil Bound Distemper	Nerolac/Berger/Asian or equivalent
	Ceiling	Oil Bound Distemper	Nerolac/Berger/Asian or equivalent
Kitchen	Flooring	Anti-Skid Ceramic Tiles	Nitco/Kajaria/RAK/Somany or equivalent
	Walls	Oil Bound Distemper/ 2 feet high Ceramic Dedo above Counter	Nerolac/Berger/Asian or equivalent
	Ceiling	Oil Bound Distemper	Nerolac/Berger/Asian or equivalent
	Counter	Polished Granite Counter Top	Standard Quality
Toilets	Flooring	Anti-Skid Ceramic Tiles	Nitco/Kajaria/RAK/Somany or equivalent
	Walls	Combination of One or more Ceramic tiles up to door height /Oil Bound Distemper	Nerolac/Berger/Asian or equivalent
	Ceiling	False Ceiling with High Quality Fibre Cement Board	Nerolac/Berger/Asian or equivalent
	Fixtures/ Accessories	Exhaust Fan, Towel Rail, Toilet Paper holder, Coat Hook, Soap dish etc.	Standard Quality
	Sanitary/ CP Fittings	Single Lever CP Fittings (Hot & Cold Water Supply), Wash Basin, E.W.C., Health Faucet of Premium Brand	Roca/Jaquar/Kohlar / Grohe or equivalent
Balconies/Utility Area	Flooring	Anti-Skid Ceramic Tiles	Nitco/Kajaria/RAK/Somany or equivalent
	Walls	Exterior Grade Paint	Nerolac/Berger/Asian or equivalent
	Ceiling	Exterior Grade Paint	Nerolac/Berger/Asian or equivalent
	Railing	1200mm High MS Railing	
Doors	Main Door	Teak Wood finish Modular Door with Magic Eye	Dormak/Durion/Duro or equivalent
	Internal Doors	Modular Doors	Dormak/Durion/Duro or equivalent
	External Door/Windows	UPVC/Powder Coated Aluminium windows with clear glass	Jindal/Hindalco/Fenista/Kommerling or equivalent
Lift Lobby	Lift	High Speed Elevator of Premium Brand	OTIS/ Schindler/Kone or equivalent
	Flooring	Granite/Marble Stone/ Vitrified Tiles	Premium quality
	Walls	Oil bound distemper/Granite wall cladding	Nerolac/Berger/Asian or equivalent
Staircase	Flooring	Marble Steps/Kota stone	Premium quality
	Walls	Oil bound distemper	Nerolac/Berger/Asian or equivalent
	Ceiling	Oil Bound Distemper	Nerolac/Berger/Asian or equivalent
Electrical	Fixtures and Fittings	Modular Switches of Premium brand	Crabtree/Anchor/Havells/Legrand or equivalent
Plumbing & Sanitary System		CPVC & UPVC fittings for water supply (Hot & Cold)	Astral/Finolex/Kissan/Vectus or equivalent
Fire Fighting		Sprinklers, smoke detectors etc. as per NBC	Standard Quality

SALIENT FEATURES

Landscape

Lush Green Central open space with more than 13935.45 lacs sq.mt / Fountains / water bodies

Fitness /Sports Facilities

Jogging Track more than 1.0 KM
Cycling Track, Tennis Court, Basket Ball Court

Entertainment

Indoor Theatre with recliner chairs

Security System

Three Tier Security, Gated Community, Access Control at entrance CCTV surveillance

Club Facilities

Restaurant
Well equipped open and covered gym,
Billiards room, Table Tennis Room
Aerobic & Yoga Center
Community Hall and Crèche
Library

Swimming Pool

Partially covered swimming pool, Separate Kids Pool

Power Back-up

100% Power Back-up for Common Areas

Ample Parking

Basement/Stilt/Open Car Parking

Connectivity

Wi-Fi Enabled Campus

Accessibility

Site serviced by road from 3 sides of 24 Mtrs.

Vastu Compliant

Vastu compliant Master Planning

Blocks & Units

Individual drop off zone for all blocks
Balcony with all bedrooms of 3 BHK units

Other Additional Facilities

Car Spa, Provision for Piped Gas Supply
Space for Daily Use Store



Project Snapshot

- Integrated Township: Home loan facility from leading banks
- Centrally Open and Green Area
- Five Star Club
- Jogging Track
- Indoor Theatre
- IGBC Approved Project
- 5 min from Taj Vedanta
- 10 min from Hazratganj
- 15 min from Railway Station
- 15 min from Airport.
- Vicinity : International Cricket Stadium, IT Park, Connaught Palace, Upcoming Metro

rishita

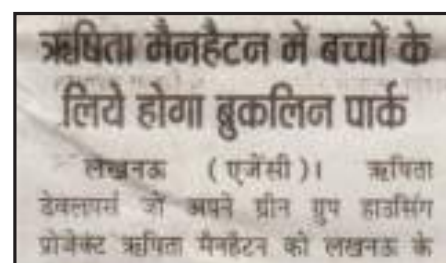
DEVELOPERS

Rishita Developers was established with the progressive thought and focused vision in 2009. Since its inception, Rishita Developers Pvt. Ltd. has delivered exclusive developments with a unique combination of traditional and contemporary designs. With the passion for creating vibrant and sustainable communities, RDPL aims to build not just homes, but a valuable legacy. It aims to build dream homes that are pocket-friendly and create spaces where life meets lifestyle. As per RDPL, the design of a home doesn't stop at the door.

Rishita Developers has continually pioneered newer technologies, bold design and precision engineering to create landmark residential townships. Propelled by the drive to change expectations and the lifestyle of people thus changing the trend of skyline in the city, it has ushered in an era marked by higher standards of living and global lifestyles. Rishita Developers is growing today as leading real estate group with its flagship construction in Lucknow.



PRESS RELEASES 2015



Rishita Developers Private Limited

Coronation Anand Tower, 1st Floor, 116-117, Vibhuti Khand, Gomti Nagar, Faizabad Road, Lucknow-226010
 E-mail: sales@rishitadevelopers.com, Website: www.rishita.in, Contact: 0522-6066-111